



# Qubix

CONNECTED PLANNING SERIES

## Integrated Business Planning & Execution (IBPX)

**Connected Planning strategies are transforming how manufacturing organizations create and execute their business plans. Integrated Business Planning & Execution (IBPX) is a new end-to-end approach that has increased margins, reduced inventory costs and accelerated the speed of decision making.**

## IBPX EXPLAINED

# Overview

**Integrated Business Planning and Execution is a strategic approach to digitizing supply chains. It extends the principles of traditional S&OP planning across the end-to-end supply chain to create one seamless management execution and reporting platform.**

Effective planning decisions require synchronized material, resource, financial, and workforce inputs for end-to-end plan execution. Today most manufacturing organizations perform their planning in siloed applications which adds complexity, introduces latency and creates barriers to maximizing execution success.

IBPX simplifies collaboration between financial and supply chain planners to drive collaboration, react faster to business disruptions and improve bottom-line performance.

### The Business Benefits of IPBX

#### Performance Optimization

Organizations can see the drivers to optimize performance by providing a single integrated view of the supply chain and underlying data model.

#### Faster Reaction Times

Planning and execution are seamlessly integrated into one platform, and embedded machine learning can predict performance gaps before they happen.

#### Business Simplification

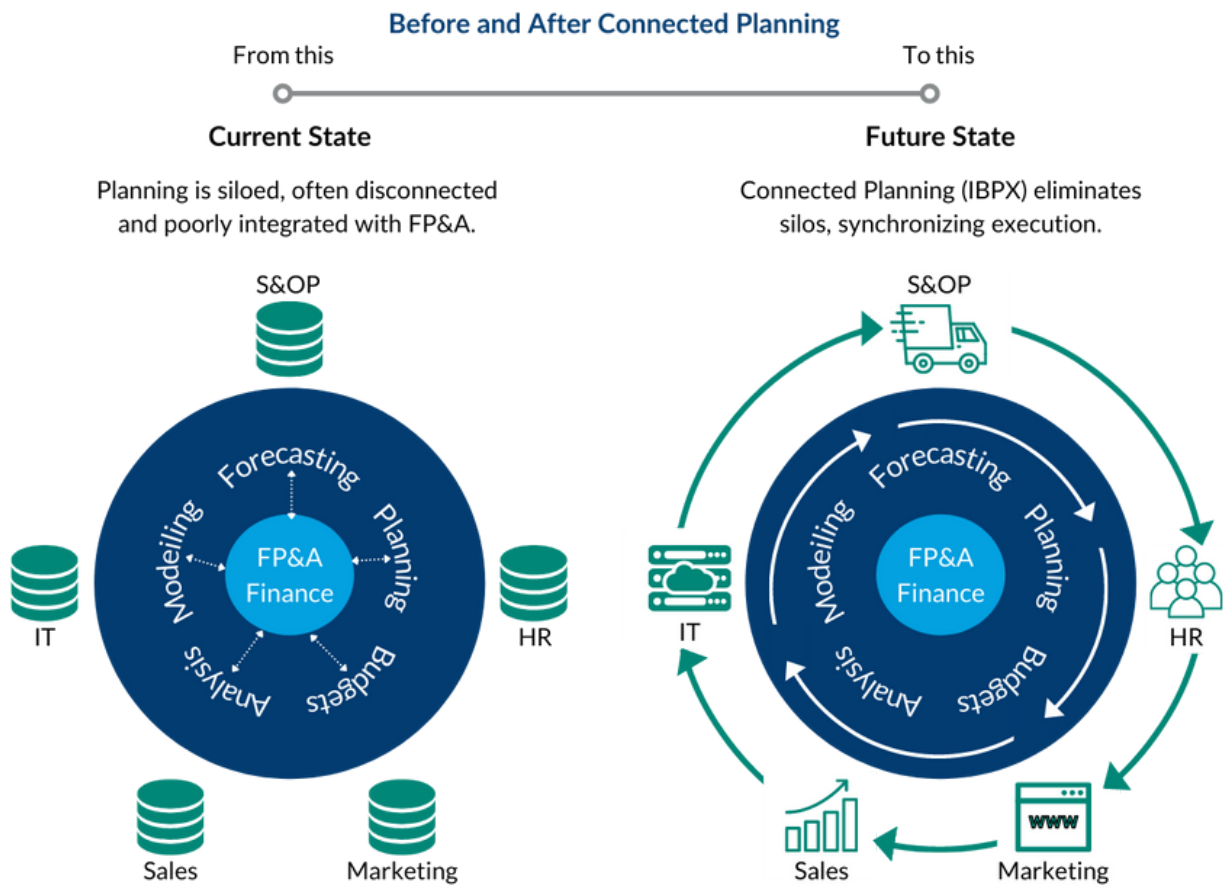
Complexity comes at a price that escalates as organizations bolt-on new systems or data sources. IBPX removes friction and unifies processes.

IBPX EXPLAINED

# Framework



## The Connected Planning Model



### What is IPBX?

The Oracle IBPX solution combines industry-leading capabilities in Enterprise Performance Management (EPM) and Supply Chain Planning (SCP) with IoT, AI and prescriptive analytics to deliver an end-to-end solution that can be deployed module by module.

## IBPX EXPLAINED

# FEATURES

### Critical IBPX Capabilities



**AI/ML** is embedded across the solution to automate predictions, connect to and monitor IoT sensors, identify anomalies and recommend course corrections.



**Connected Planning** means all planning from S&OP, financial, workforce, capital, projects and cash flow can be synchronized and integrated in real-time.



**Intelligent Automation** is everywhere, whether it is to automate predictions based on actuals, trigger reactions to unexpected events, or replace manual processes.



**Advanced Analytics** enables sophisticated scenario modelling across the entire planning process to assess the probability of outcomes and protect profit winners.

### No need to start from scratch.

Several IBPX capabilities introduce new technology-enabled opportunities to deliver immediate business impact. Fortunately, our client's don't have to start again to take advantage of IBPX. Our solution approach is designed to enhance or add new capabilities in a modular implementation model.

## WHY WORK WITH QUBIX?

# New Perspectives. Smarter Deployments.

Qubix is an award-winning global advisory and systems implementation consultancy with 1,000+ successful ERP, Performance Management and Analytics engagements.



### **New Perspectives**

Our consulting team is comprised of highly experienced and technology-driven change leaders. With 1,000+ engagements across a spectrum of industries and business processes, we bring learned intelligence and techniques to every customer scenario.



### **Smarter Implementations**

Not every client needs a radical transformation of their supply chain planning, and sometimes what is required is the speedy deployment of a proven approach with minimum fuss. We can help in both scenarios and can grow with you as your needs change.

## HOW WE CAN HELP?

# Business process knowledge and industry specific experience

- Driver-based Planning & Budgeting
- Strategic Workforce Planning
- Capital Expense Planning
- Project Financial Planning
- Financial Close Automation
- Account Reconciliation
- Cash Flow Forecasting
- Franchise / Group Reporting
- Board & Management Reporting
- Regulatory Reporting (GAAP / IFRS)
- Cost Allocations
- Customer Profitability
- KPI & Balance Scorecards
- HR Analytics
- Predictive Modelling
- M&A Modelling
- Debt, Liquidity & Capital Analysis
- Autonomous Data Warehouse
- Data Orchestration
- ESG Reporting



NatWest



QBE



## Global contact details

Website

[www.qubix.com](http://www.qubix.com)

Email

[sales@qubix.com](mailto:sales@qubix.com)

Telephone

Visit our website

The Qubix logo, featuring the word "Qubix" in a bold, sans-serif font with a stylized 'Q'.

Copyright 2021, The Qubix Group.